



W I L D E R M U T H E N V I R O N M E N T A L



OUR MISSION

To develop innovative, sustainable solutions to critical water resource problems and to actively support important environmental decision-making processes.

Balancing conservation and sustainable development through rigorous scientific inquiry, thoughtful engineering and enlightened political processes...

Wildermuth Environmental, Inc. is a specialized water resources consulting firm dedicated to creating visionary yet practical solutions to the complex water problems facing California's municipalities, government agencies, and private companies.

Founded in 1990, Wildermuth Environmental has built a solid reputation as trusted partner to water districts, municipalities, dischargers, regulators and others in the water community by providing sage water resources consulting and innovative solutions with a focus on sustainable resource utilization.

Raising the Bar in Water Resources Management

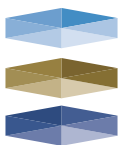
Wildermuth Environmental is unmatched in its ability to design and implement holistic, sustainable solutions that fuse the needs of clients, the environment and surrounding communities.

The forward-thinking scientists and environmental engineers at Wildermuth Environmental identify problems precisely, and solve them through a methodical process that weighs political, legal, and technical considerations while building consensus for ideas and solutions.

The cornerstone of the firm's relationships with employees, clients, regulatory agencies, and business partners is its pledge to perform every service, every engagement, and every project with integrity. In essence, Wildermuth Environmental serves as extended staff to its clients, which is reflected in the firm's commitment to excellence, professionalism, and responsibility.

Creating a Legacy for Future Generations

In addition to creating long-term, sustainable water solutions, Wildermuth Environmental is committed to helping develop the communities in which it works. The company maintains a proactive outreach program that promotes education and environmental stewardship, and actively supports selected charitable organizations.



WILDERMUTH™
ENVIRONMENTAL INC.

“When it comes to groundwater work, you won’t find anyone better. Wildermuth Environmental is a first-class firm with the best scientists and findings that stand up to intense scrutiny.”

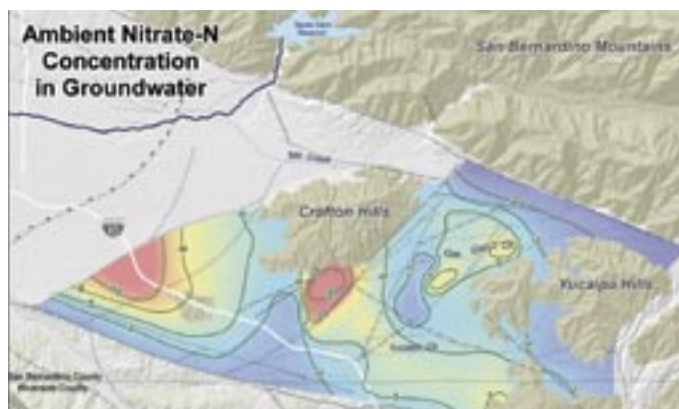
— Andrew Schlange, Contract Manager, San Timoteo Watershed Management Authority

CLIENT SERVICES: As one of Southern California’s leading consulting firms in the management of water resources, Wildermuth Environmental offers demonstrated prowess in navigating through technical and institutional challenges, envisioning new solutions and obtaining consensus among competing interest groups.

Groundwater Basin and Watershed Management Program Design and Implementation

Wildermuth Environmental works with key watershed stakeholders to develop and deploy sustainable, environmentally friendly management plans for groundwater basins and watersheds. These management plans meet all regulatory requirements, enabling clients to deliver reliable, high quality water supplies with very competitive water and sewer rates. In addition, Wildermuth Environmental often works with the appropriate regulatory agency to amend or change regulations to optimize basin management. The firm employs a proven process to:

- Identify the needs, issues, and concerns of all stakeholders
- Produce a set of measurable goals to meet those needs
- Identify the impediments to achieving the goals
- Provide scientific basis for management initiatives
- Create management programs to remove impediments to the goals
- Implement the groundwater basin management program



Distinctive features of Wildermuth Environmental's monitoring programs include:

- Monitoring programs are keyed to a relational database management system that generates work orders and chains-of-custodies for field technicians
- A unique quality control protocol ensures that regulatory monitoring is performed on schedule and that samples are accurately tested
- All data from monitoring programs is stored in one master database, which facilitates analyses and report generation



Groundwater and Surface Water Monitoring Programs

At Wildermuth Environmental, all water monitoring programs begin with a set of clearly articulated questions that need to be answered. The company then fashions pioneering monitoring programs designed to provide answers in specific, quantitative terms. Wildermuth Environmental's goal is to design monitoring programs that provide the requisite information at the lowest possible cost.

In addition to conventional monitoring tools, Wildermuth Environmental uses advanced monitoring devices, including extensometers, low-flow purge and sampling devices, and lysimeters.

Recharge Master Plans and Basin Testing and Monitoring

Wildermuth Environmental helped pioneer the recharge master plan concept, creating specialized monitoring and analytical tools to estimate recharge and recharge quality. The firm handles all aspects of design,

“Wildermuth Environmental exhibits the highest ethical and professional standards. We developed an ASCE award-winning Recharge Program based on their recharge master plan, and their cost-effective monitoring programs meet strict regulations.”

— Richard Atwater, CEO/General Manager, Inland Empire Utilities Agency

testing, and operation of recharge basins, including concept development, exploratory drilling, preliminary design, operation plan design, operational monitoring, and forensic testing. Additionally, Wildermuth Environmental specializes in the design of monitoring wells and lysimeters, typically supervising and assisting in the construction of these monitoring facilities.

Regulatory Compliance for Recharge and Discharge of Recycled Water

From initial regulatory approval to compliance monitoring and reporting, Wildermuth Environmental offers the expertise that moves recycled water recharge and discharge projects forward. The company’s key contributions in the field include the development of Water Quality Control Plan revisions that modify water quality objectives to promote water recycling, and the use of lysimeters for monitoring soil aquifer treatment processes. Wildermuth Environmental assists treatment plant owners in complying with discharge permits by employing innovative approaches to permit negotiations, monitoring, compliance reporting, surface water and groundwater modeling, and, where appropriate, water quality objective revisions.

Preparation of Urban Water Management Plans and Support for Water/ Recycled Water Master Plans

Wildermuth Environmental stays abreast of current requirements of the Urban Water Management Planning Act and related legislation, enabling the firm to provide the most forward-thinking strategies to its clients. The company’s expertise includes the hydrological, institutional, legal, and regulatory aspects of water supply planning.

Water Rights and Litigation Support

Wildermuth Environmental’s water rights and litigation support services are generally limited to existing clients, though the

company will provide these services to new clients given that greater public interests are being served. Services in this arena include:

- Scientific and engineering services for Watermaster processes
- Scientific and engineering opinions regarding existing or potential water rights
- Pollution liability
- Expert witness support for litigation



Groundwater Treatment Systems Feasibility Support

Drawing on their extensive knowledge of hydrological principles, groundwater flow systems, and water quality, the professionals at Wildermuth Environmental support process designers and key decision

makers in developing new groundwater treatment systems. The firm offers comprehensive experience in:

- Interpreting groundwater datasets
- Developing data acquisition programs
- Applying groundwater models
- Characterizing and displaying data and modeling results

This depth of expertise allows Wildermuth Environmental professionals to help clients understand the magnitude of the problem, make informed decisions about the treatment of contaminated groundwater, and select and evaluate treatment systems.



“When we need innovative thinking about water supply and regional planning, we call Wildermuth Environmental. I personally have worked with them for 10 years and can say, without reservation, that they are the absolute best in their field.”

— Stacey Aldstadt, General Manager, City of San Bernardino Municipal Water Department

TECHNICAL EXPERTISE

Regulatory Compliance

- Expert knowledge of federal and state regulatory requirements for water and recycled water
- Development and implementation of innovative approaches to compliance with regulatory requirements at both local and watershed scales

Groundwater and Surface Water Modeling

- Extensive experience with industry-standard models
- Design and development of custom models and tools that efficiently estimate the natural and transactional hydrology at the land surface
- Design and implementation of custom models to assess waste-load allocations and develop recharge master plans

Database Management Systems

- Development of relational database management systems for groundwater, surface water, and recycled water data

Geographic Information Systems (GIS)

- Expert map-making services for accurate display of model results that support decision-making processes
- Integration of database and GIS for display and analysis of water resource data

Hydrology and Hydrogeology

- Design and construction of groundwater and surface water monitoring networks
- Execution of data collection and data entry elements of monitoring programs by highly trained field staff
- Expert analysis of water resource data and concise reporting to support decision makers

JOINING THE WILDERMUTH ENVIRONMENTAL FAMILY

From scientists and engineers to administrative and support staff, Wildermuth Environmental takes pride in employing the industry's best and brightest professionals. The company fosters a spirit of teamwork, offering a dynamic, rewarding environment where employees are given the opportunity to work hand-in-hand with leading-edge water management scientists and academic scholars. Wildermuth Environmental values its employees, generously rewarding them in return for creativity, hard work, and excellence, and supporting them in balancing professional, social and family interests. The firm is always looking for qualified candidates who have enthusiasm and passion for work that matters.



“Wildermuth Environmental produces high-quality work with the utmost integrity. We always get the facts – not what they think we want to hear – enabling us to make environmentally sound decisions.”

— Bernard Kersey, former General Manager, City of San Bernardino Municipal Water Department



www.WildermuthEnvironmental.com