



## Integrated Regional Water Management Plan, San Timoteo Watershed Management Authority

### Background

The San Timoteo Watershed Management Authority (STWMA) was formed in January 2001 by the Beaumont Cherry Valley Water District, the City of Beaumont, the South Mesa Water Company, and the Yucaipa Valley Water District. The purpose of the STWMA is to prepare and implement a water resources management program for the San Timoteo Watershed and the waters tributary. This Program includes conserving local water supplies, improving surface and ground water quality and quantity, protecting and enhancing ground-water storage and recreational resources, preserving open space, protecting wildlife habitat and wetlands, protecting and enhancing agriculture, and developing and enhancing the region's water resources for the benefit of the public.

The water resources management program includes watershed and basin monitoring; groundwater storage, banking and conjunctive use; stormwater capture and management; recycled water programs and projects; wetlands, wildlife, and open space protection; water quality protection and enhancement; and water conservation and efficiency.

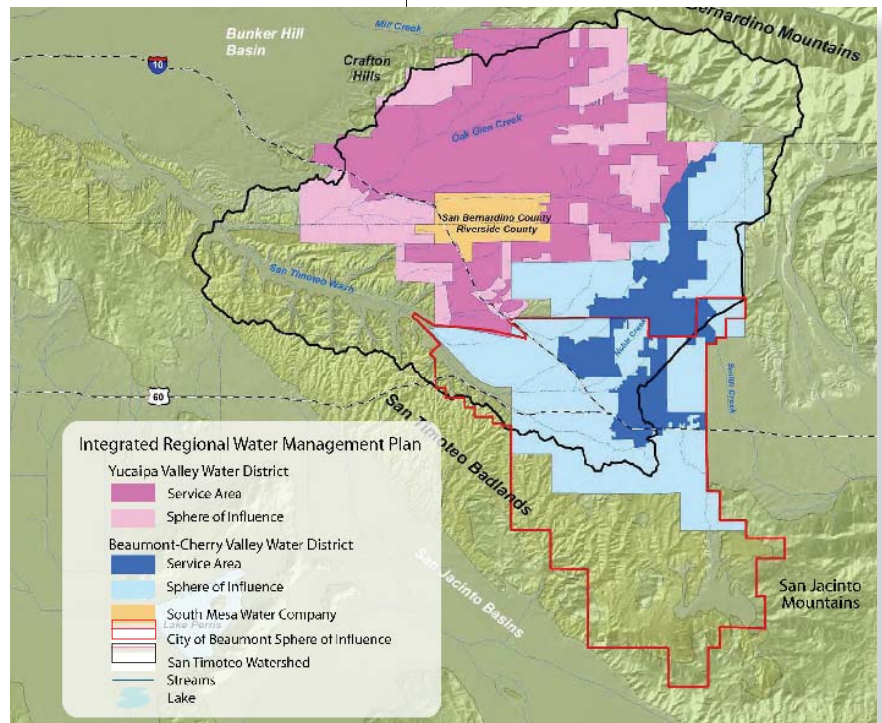
### Stakeholder Involvement

The STWMA formed a stakeholder group to develop a watershed-scale integrated water resources management program to ensure a safe and reliable water supply for all water users in the watershed. The STWMA retained Wildermuth Environmental (WEI) in March 2001 to develop the San Timoteo Watershed Management Program (STWMP). The STWMP was completed in March 2002 and was documented in *The San Timoteo Watershed Management Program, Phase 1 Report (March 2002)*.

The Phase 1 Report and the process used to develop it were in the nature of a scoping report for purposes of the National Environmental Policy Act (NEPA) and the California Environmental Quality Act (CEQA). The Phase 1 report was updated and re-titled *The Integrated Regional Water Management Program for the San Timoteo Watershed (IRWMP)* consistent with Department of Water Resource (DWR) guidelines for integrated regional water management programs in June 2005.

### IRWMP

The IRWMP is consistent with other reports that are commonly referred to as integrated regional water management plans such as the



San Timoteo Watershed & Water District Service Areas



## Integrated Regional Water Management Plan, cont'd

Santa Ana Integrated Watershed Plan: Water Resources Element developed by the Santa Ana Watershed Project Authority (SAWPA, 2001) and the Chino Basin Optimum Basin Management Program (WEI, 1999).

The IRWMP was developed and implemented in two phases for the long-term benefit of the STWMA area stakeholders. Phase 1 included describing the areas' water resources, establishing goals concerning the needs and issues identified to protect and enhance these resources, and affirming a management plan to accomplish the goals. This is documented in *The San Timoteo Watershed Management Program, Phase 1*

*Report (March 2002)*, and its successor, the updated and re-titled *Integrated Regional Water Management Program for the San Timoteo Watershed (June 2005)*.

### Goals of the IRWMP

The five goals of the IRWMP include:

1. *Enhancement of basin water supplies,*
2. *Protection and enhancement of water quality,*
3. *Optimizing management of the STWMA-area groundwater basins,*
4. *Protection of riparian habitat in San Timoteo Creek and the*

*protection/enhancement of habitat in the STWMA area, and*

5. *Equitable distribution of the benefits and costs of the IRWMP.*

### Phase 1 of IRWMP

Phase 1 of the IRWMP process included early implementation of Program Elements 1, 2, 4, and 5. The Phase 1 investigation inventoried the water resources in the STWMA service area and described, at a reconnaissance level, the occurrence and quality of these waters. The current and future water demands of the member agencies were described based on planning information provided by the STWMA member agencies and the City of Banning (Banning). The water and recycled water master plans and the urban water management plans of the agencies were reviewed to assess how the STWMA member agencies and Banning were planning to meet their water demands and dispose of or reuse their recycled water. This research revealed daunting water resource management challenges and opportunities.

### Phase 2 of IRWMP

Phase 2 of the IRWMP is intended to result in the implementation plan, and the construction and operation of the facilities necessary to meet the IRWMP goals. Existing and planned facilities were



*Recharge basin in the San Timoteo Watershed*



## Integrated Regional Water Management Plan, cont'd

reviewed during Phase 1 of the IRWMP process. Existing facilities are facilities for which CEQA is complete and that have been or will be constructed by January 1, 2007. Planned facilities are facilities for which CEQA documents have been prepared and certified by the project proponents that will be constructed in the future.

All existing and planned facilities were assumed to be constructed and were integrated into the IRWMP analysis because they are:

- Necessary to fulfill the local entities' mission,
- Consistent with and an integral component of the IRWMP, and
- Necessary to implement the IRWMP.

Most of the facilities included in the IRWMP will be implemented by the STWMA members or others. However, the STWMA may implement facilities on behalf of its members or cooperating entities. The types of facilities that will be necessary to implement the IRWMP include pipelines, pump stations, wells, monitoring wells, storage reservoirs, treatment plants, dams, rubber dams, basins and T-levees. The IRWMP also identified project objectives or program elements to achieve the goals.

### Program Elements

The STWMA has entered into the implementation phase of the IRWMP. The progress and accomplishments since March 2002 and the specific accomplishments during 2005 are described below through eight management initiatives or program elements that include:

1. *Development and implementation of a comprehensive monitoring program for groundwater level, groundwater quality, production and diversion, subsidence, surface water discharge and surface water quality,*
2. *Development and implementation of a comprehensive surface water management and recharge program,*
3. *Development and implementation of a regional supplemental water master plan for the STWMA area,*
4. *Development and implementation of a salt management program,*
5. *Establishing a groundwater management entity,*
6. *Development of conjunctive-use programs,*
7. *Development and implementation of a habitat and recreation program for the San Timoteo Creek Watershed, and*

8. *Development and implementation of a financial plan to enable the IRWMP.*

Currently, the proven local water supplies for the area are about 32,000 acre-ft/yr and ultimate demand will be about 99,000 acre-ft/yr; as such, the STWMA service area will need to develop 67,000 acre-ft/yr of new supplies. The IRWMP was designed to ensure that the additional 67,000 acre-ft/yr of water will be there when it is needed.

The estimated cost of IRWMP implementation is about \$300 million (includes the cost to member agencies to implement their own projects that are included in the IRWMP).

### Key Benefits the IRWMP

The benefits of STWMA's IRWMP are the enhancement of basin water supplies, protection and enhancement of water quality, optimizing management of STWMA-area groundwater basins, protection of riparian habitat in San Timoteo creek and the protection and enhancement of habitat in the STWMA area, and equitable distribution of the benefits and costs of the IRWMP.

The IRWMP is available for review at: [www.stwma.org](http://www.stwma.org).